



For Supervisor's use only

1

90179



NEW ZEALAND QUALIFICATIONS AUTHORITY  
MANA TOHU MĀTAURANGA O AOTEAROA



National Certificate of Educational Achievement  
TAUMATA MĀTAURANGA Ā-MOTU KUA TAEA

## Level 1 Human Biology, 2004

### 90179 Describe functioning of the human reproductive system

Credits: Three

9.30 am Tuesday 23 November 2004

Check that the National Student Number (NSN) on your admission slip is the same as the number at the top of this page.

You should answer ALL the questions in this booklet.

If you need more space for any answer, use the page provided at the back of this booklet and clearly number the question.

Check that this booklet has pages 2–8 in the correct order and that none of these pages is blank.

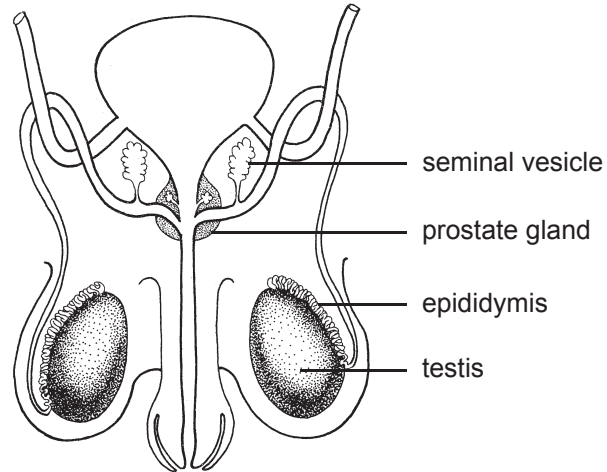
**YOU MUST HAND THIS BOOKLET TO THE SUPERVISOR AT THE END OF THE EXAMINATION.**

Achievement Criteria		<i>For Assessor's use only</i>	
Achievement		Achievement with Merit	Achievement with Excellence
Describe functioning of the human reproductive system.	<input type="checkbox"/>	Explain functioning of the human reproductive system.	<input type="checkbox"/>
Overall Level of Performance			<input type="checkbox"/>

You are advised to spend 30 minutes answering the questions in this booklet.

### QUESTION ONE

The diagram below shows the human male reproductive system.



(a) Describe the functions of each of the following parts:

Part	Function
Testis	
Epididymis	
Prostate gland	
Seminal vesicle	

(b) Describe TWO **physical changes** that occur in the body of a 13-year-old boy beginning puberty.

(1) \_\_\_\_\_  
\_\_\_\_\_

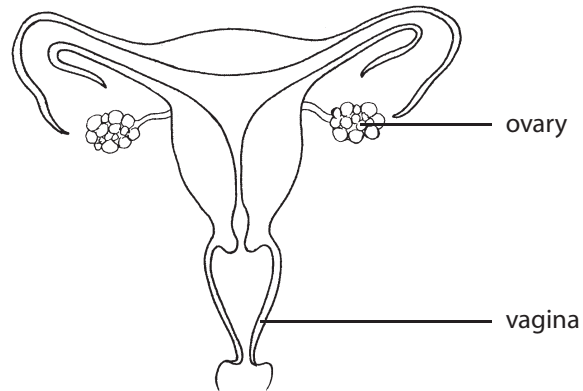
(2) \_\_\_\_\_  
\_\_\_\_\_

(c) Explain why the physical changes have started to occur in his body.

\_\_\_\_\_  
\_\_\_\_\_  
\_\_\_\_\_  
\_\_\_\_\_  
\_\_\_\_\_

**QUESTION TWO**

The diagram below shows the human female reproductive system.



- (a) In the correct order, name the structures that sperm must pass through in a woman to reach and fertilise an egg.

---

---

- (b) A woman is pregnant with twins (a boy and a girl).

Explain how the twins were formed in terms of ovulation **and** fertilisation.

---

---

---

---

---

---







